

TO BE COMPLETED BY CUSTOMER / CONTRACTOR

COMPANY :

P.O. NUMBER :

SITE ADDRESS :

SITE CONTACT & PHONE :

PREFERRED DELIVERY DATE (TBC SW360) :

STORMFILTER REFERENCE (IF APPLICABLE) :

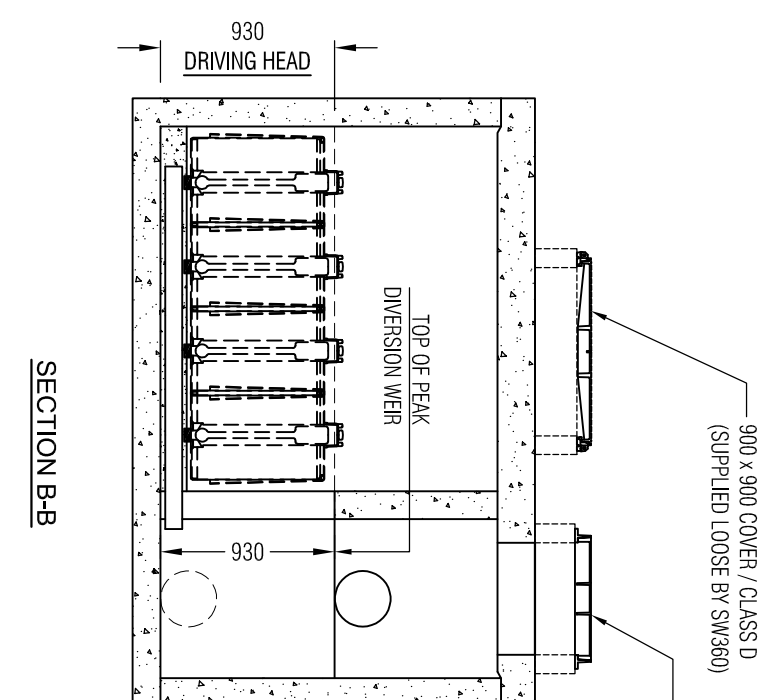
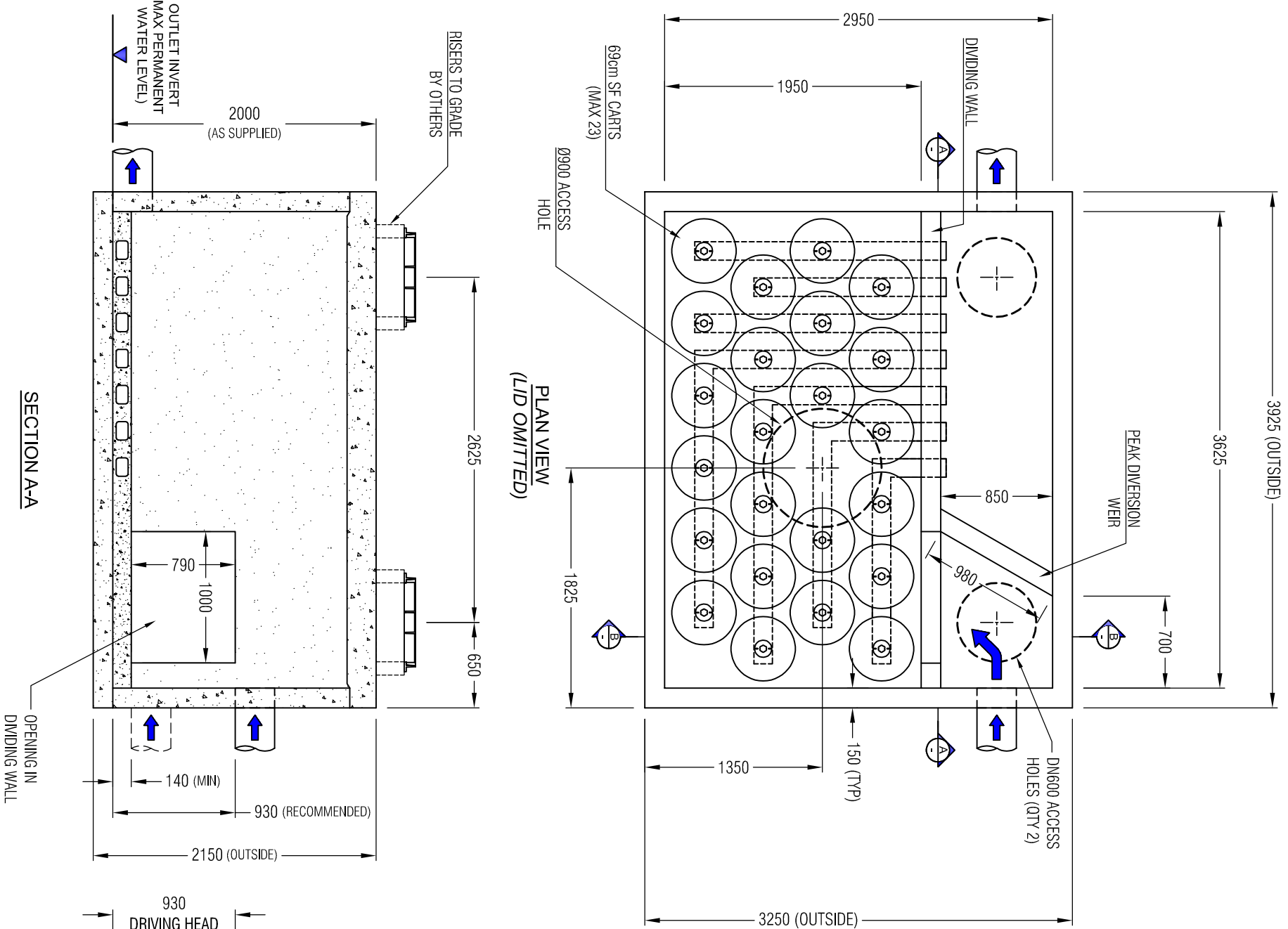
INLET PIPE Ø :	PIPE MATERIAL :	CORE DRILL Ø :	INLET (IL) :
OUTLET PIPE Ø :	PIPE MATERIAL :	CORE DRILL Ø :	OUTLET (IL) :
LID LEVEL (RL) :	DTI :	SIGNED :	DATE :
COMPLETED BY :		SIGNED :	DATE :

TO BE COMPLETED BY SW360

SW360 PRODUCT CODE :			
MEDIA TYPE (CIRCLE ONE) :	PERLITE	ZPG	OTHER :
CARTRIDGE QTY (STATE) :			PRE-INSTALLATION (Y/N) :
SP FLOW RATE (CIRCLE ONE) :	FULL (Ø 27.6 ID)	3 QTR (Ø 24.0 ID)	HALF (Ø 19.7 ID)
ACCESS COVERS (CIRCLE ONE) :	BLACKMUSTARD	WHITE/OPAL	GREEN
COMPLETED BY :	AS DRAWN - YES or NO	OTHER :	DATE :
SIGNED :		SIGNED :	DATE :

APPROX WEIGHTS

VAULT WEIGHT: **18500 Kg (EMPTY)**
 VAULT WEIGHT: **19650 Kg (WITH 23 x ZPG CARTS FITTED)**
 LID WEIGHT: **6000 Kg**



NOTES

1. SW360 TO CONFIRM WEIGHTS AND LIFTING DETAILS PRIOR TO DELIVERY.
2. UNIT SUPPLIED WITH INLET & OUTLET HOLES PRE-CORED.
3. INLET AND OUTLET PIPES BY OTHERS.
4. SEALING / GROUTING OF CONCRETE ARE COMPLETED WITH LOCAL CODES AND REGULATIONS ARE COMPLIED WITH.
5. RISERS REQUIRED FROM VAULT LID TO ACCESS COVERS (FINISHED SURFACE LEVEL) SUPPLIED BY THE CONTRACTOR. CONTACT **0800STORMWATER** FOR RECOMMENDATIONS.
6. CONTRACTOR TO TAKE APPROPRIATE MEASURES TO PROTECT CARTRIDGES FROM CONSTRUCTION RELATED EROSION RUNOFF.
7. BACKFILL, BEDDING AND BUOYANCY DESIGN BY ENGINEER OF RECORD.
8. QTY OF CARTRIDGES BY ENGINEER OF RECORD.
9. CONCRETE VAULT AND LID DESIGNED AND MANUFACTURED TO HN-HO-72
10. DESIGN CHECK REQUIRED WHEN COVER ABOVE LID EXCEEDS 1.0M
11. OTHER CONFIGURATIONS ARE POSSIBLE. FOR REQUIREMENTS OUTSIDE OF DRAWING SPECIFICATIONS PLEASE CONTACT **0800STORMWATER**.



0800 STORMWATER

sales@stormwater360.co.nz

www.stormwater360.co.nz

CONDITION OF USE

© STORMWATER360 2020
 Any unauthorised reproduction of this drawing in part or in full is prohibited

STORMFILTER@ PEAK DIVERSION OFF-LINE CARTRIDGE FILTRATION SYSTEM

23 x 69cm CART PD VAULT (RIGHT INLET) GENERAL ARRANGEMENT

SCALE : N.T.S. DRG No : SF-VPD-69-3630-R-20 REV : 1 DATE : 27/03/20

JOB NO :	REV	REVISION DETAIL	DATE
PROJECT :	1	WEIGHTS ADDED	27/03/20
DRN :	0	APPROVED	17/03/20
G.S. :			
CKD :			