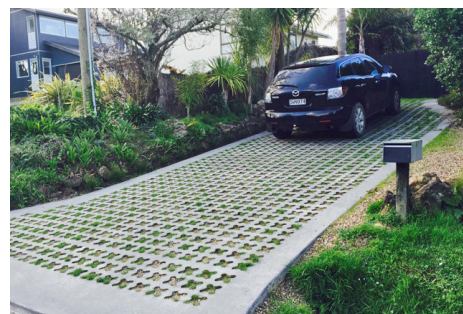
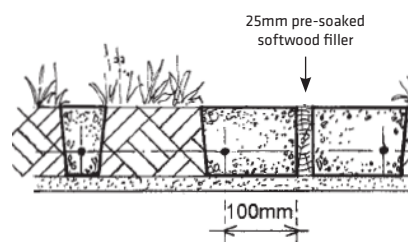
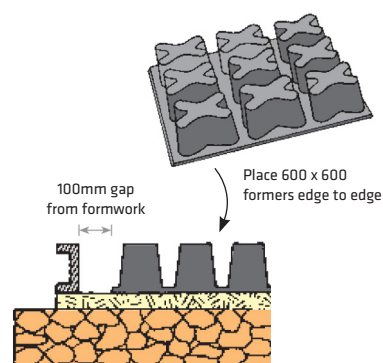
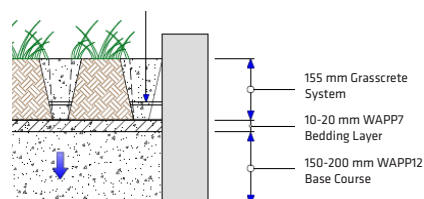


# GRASSCRETE™ Permeable Paving System

## Installation Check List

- ✓ Supplied former comes in 600x600mm size.
- ✓ Basecourse shall be 150-200mm deep and material is washed WAPP12  
Refer Grasscrete Laying Guide Traffic Applications, page 1
- ✓ Bedding layer shall be 10-20mm thick and material is washed WAPP7  
Refer Grasscrete Laying Guide Traffic Applications, page 2
- ✓ Ensure there is a minimum of 100mm of concrete collar on all sides  
Refer Grasscrete Laying Guide Traffic Applications, page 3
- ✓ Ensure the maximum area without expansion joints is 10x10m centres  
Refer Grasscrete Laying Guide Traffic Applications, page 5
  - Expansion joints shall consist of a 25mm pre-soaked softwood filler
- ✓ Ensure concrete final slump is flowing for general applications or 75-100mm for steep slopes  
Refer Grasscrete Laying Guide Traffic Applications, page 6
  - Ensure maximum water/cement ratio is 0.55
  - Ensure maximum size aggregate is 10mm
- ✓ Ensure the reinforcement mesh has min. diameter of 8mm with 200x200mm grids  
Refer Grasscrete Cast Insitu Paving System Design Spec, Page 15
- ✓ Ensure you have enough media to fill voids and all gaps.  
When filling formers with media ( soil), wet the media, fill and compact twice. Spread grass seed before final media layer. Ratio of concrete to void is 60:40 but more soil may be needed to fill the gaps.



## Equipment required

Ensure you have the following equipment:

**Rubber bladed aluminium squeegee** for smoothing surface

TIP

Drawing squeegee diagonal across will prevent the squeegee dropping into concrete ribs

**Wooden board** to lay on top of the formers for staff to navigate through site

TIP

Pouring concrete onto wooden board instead of former will dissipate energy and reduce former movement

**Multi-headed Industrial LPG flame torch burner** to melt the Grasscrete former, available from Stormwater360

TIP

Breaking/puncturing the former prior to melting will allow the heat to penetrate and melt the former quicker

TIP

Melt only the top part of the former to create opening, the sides does not need to be melted all the way to the bottom

